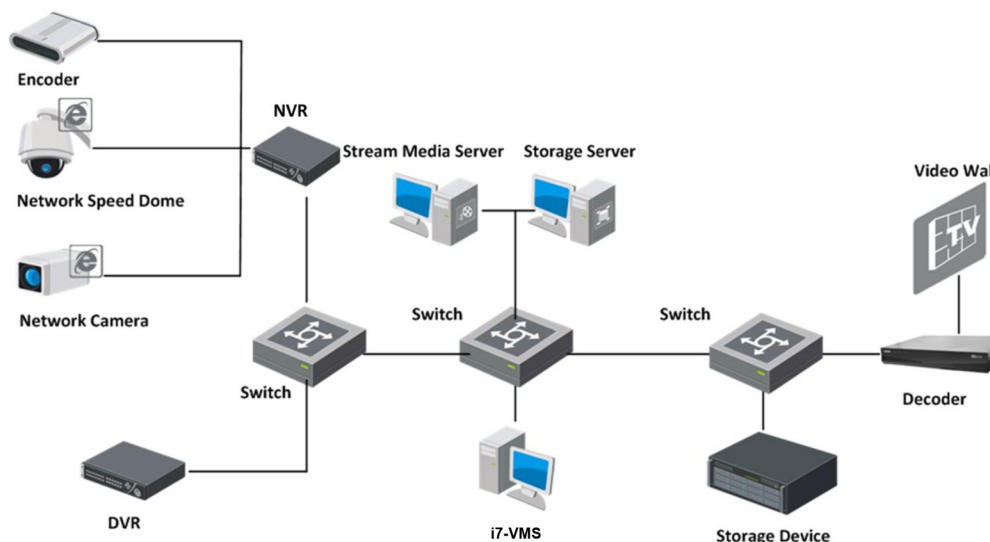


CLIENT SOFTWARE i7-VMS FOR i7 SERIES INTERNEC DEVICES

Typical Application



System Requirements

Client Requirements for H.264 Encoding Format

Minimum	Processor	Intel® Core™ i3-2100 @ 3.10GHz
	Memory	2 GB of RAM
	Operating System	Microsoft® Windows 7 (64-bit)
	NIC	Realtek® PCIe GbE Family Controller
	Video Card	NVIDIA GeForce GTS 430
Recommended	Processor	Intel® Core™ i5-4590 @ 3.30GHz
	Memory	8 GB of RAM
	Operating System	Microsoft® Windows 7 (64-bit)
	NIC	Realtek® GbE Network Interface Card
	Video Card	Intel HD Graphics 4600/2G
High Performance	Processor	Intel® Core™ i7-5930K @ 3.50GHz
	Memory	16 GB of RAM
	Operating System	Microsoft® Windows 7 (64-bit)
	NIC	Intel® Ethernet Connection (2) I218-V
	Video Card	NVIDIA GeForce GTX970

Maximum Number of Cameras Viewed per Client (Software Decoding)

Encoding Format	Resolution	Bit Rate (Mbps)	Frame Rate (fps)	Maximum Number of Cameras Viewed Simultaneously		
				Minimum	Recommended	High Performance
H.264	4CIF	1	25	30	40	64
	HD720P	2	25	12	18	31
	1080P	4	25	5	8	17

	600W	11	25	4	5	6
H.264+	HD720P	2	25	13	17	32
	1080P	4	25	6	7	19
H.265	HD720P	2	25	8	9	26
	1080P	4	25	3	4	13

Maximum Number of Cameras Viewed per Client (Software Decoding and Hardware Decoding Combined)

Encoding Format	Resolution	Bit Rate (Mbps)	Frame Rate (fps)	Maximum Number of Cameras Viewed Simultaneously	
				Intel® Xeon CPU E3-1225 V3 8 GB of RAM Windows® Embedded Standard (64-bit) Intel® HD Graphics P4600/P4700	Intel i7-4790K 8 GB of RAM Microsoft® Windows 7 (64-bit) NVIDIA GeForce GTX970
H.264	HD720P	2	25	64	42
	1080P	4	25	30	25

Note: The above parameters are estimated and for reference only. Under same resolution and frame rate, the bitrate of different camera manufacturers may be different. Moreover, the decoding performance may also be different for different manufacturers.

Server Requirements (Storage Server and Stream Media Server)

Minimum	Processor	Intel® Core™ 2 Duo E6850 3.0 GHz
	Memory	4 GB of RAM
	HDD	80 GB Hard Drive
	NIC	100/1000 Mbps Ethernet Network Interface Card
	Video Card	Standard SVGA Video Card
Recommended	Processor	Quad Core Intel® Xeon® E5640 2.66 GHz
	Memory	16 GB of RAM
	Operating System	64-bit Operating System
	HDD	80 GB SATA II Hard Drive
	NIC	GbE Network Interface Card
	Video Card	Standard SVGA Video Card

Specifications

Model		i7-VMS v2
Client	Encoding Device	Up to 256 encoding devices supported
	Group	Up to 256 groups supported; Up to 256 channels can be imported to each group
	Channel	Up to 1024 channels can be imported to all groups
	Storage Server	Up to 16 Storage Servers supported
	Stream Media Server	Up to 16 Stream Media Servers supported
	Decoding Device	Up to 64 decoding devices supported
	Door Station	Up to 16 door stations supported
	Indoor Station/Master Station	Up to 512 indoor stations or master stations supported
	Card (Video Intercom)	Up to 50000 cards supported
	Security Control Panel	Up to 50 Security Control Panels supported
	Live View	Up to 64-ch live view supported at a time

	Auxiliary Screen Preview	Up to 4 auxiliary screens supported for live view
	User	Up to 50 users and one super user supported
	Playback	Up to 16-ch playback supported at a time
	Synchronous Playback	Up to 16-ch synchronous playback supported
	E-map	Up to 256 E-maps can be added
	Download	Up to 16 downloading tasks supported at a time
Storage Server	User	Up to 32 users can be added
	Recording Performance	Up to 64-ch × 2 Mbps supported at a time
	VOD Performance	Up to 64-ch × 2 Mbps supported at a time
	i7-VMS Client	No limit for the amount of i7-VMS connected to the Storage Server
Stream Media Server	Incoming/Outgoing Stream	Up to 64-ch incoming video stream supported; Up to 200-ch outgoing video stream supported