

**Local Playback Software**  
**User Manual**  
**(V2.0)**

Thank you for purchasing our product. This manual applies to Local Playback software, please read it carefully for the better use of this software.  
The contents in this manual are subject to change without notice.

## Contents

Chapter 1 Introduction.....	3
1.1 Overview .....	3
1.2 System Requirements.....	3
1.3 Conventions.....	3
1.4 Version Information .....	3
Chapter 2 Local Playback .....	4
2.1 Searching Record Files.....	4
2.2 Playback Management.....	5
Chapter 3 Log Search .....	8
Chapter 4 Configuration.....	10

# Chapter 1 Introduction

## 1.1 Overview

The Local Playback software can be used to play back the record files from the Storage Server and Encoding Server of iVMS-4200 client software. You can also play back the record files by connecting the hard disk of the device (e.g., DVR, NVR and DVS) or the hard disk that stores record files from Remote Backup software to the PC on which the Local Playback software is installed.

## 1.2 System Requirements

**Operating System:** Microsoft Windows XP / Windows 2003 32-bit, Windows 7 / Windows 2008 32-bit or 64-bit

**CPU:** Intel Pentium IV 3.0 @ 3.00 GHz or above

**RAM:** 1G or above

**Video Card:** RADEON X700 Series


**Video Memory:** 256MB or above

**Display:** 1024\*768 resolution or above


## 1.3 Conventions

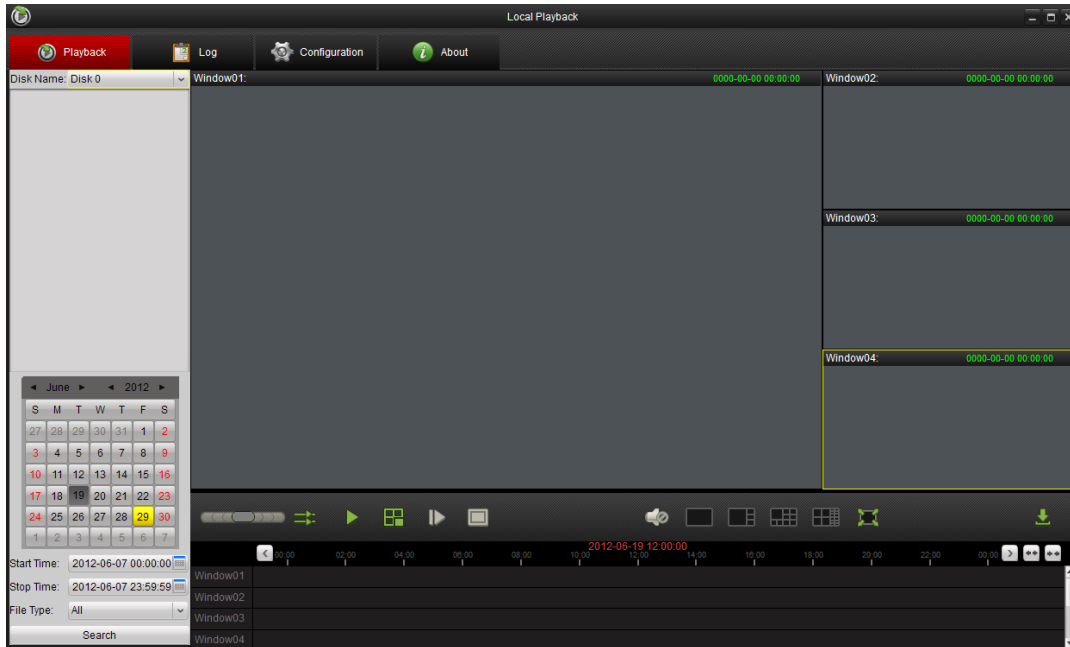
In order to simplify the description, we define the “Local Playback software” as “software” in the following chapters.

## 1.4 Version Information

After installing the software successfully, run the software and click  to view the version information of the software.

## Chapter 2 Local Playback

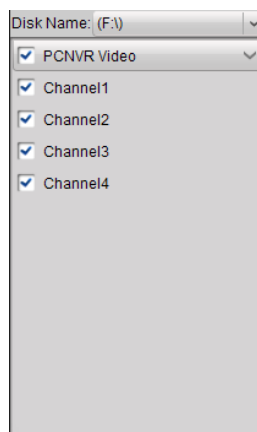
Click  tab to enter the Playback interface.



### 2.1 Searching Record Files



**Steps:**

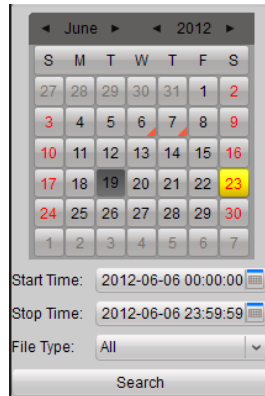
1. Select a disk that stores record files in **Disk Name** dropdown list. The channels which have record files stored in the disk will be listed.
2. Check  checkbox before the channel to select the channel.



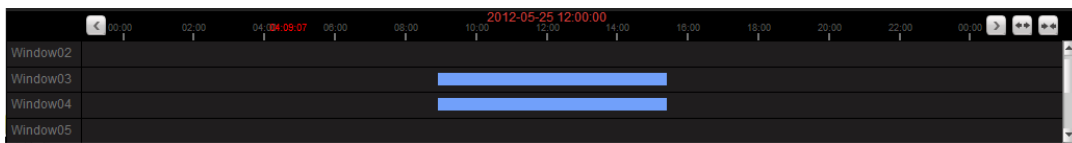
3. Select the date you want to search record files. Set the start time, end time and file type to restrict the searching condition. Click **Search** to search the record files.





**Note:** If there are record files for the channels in that day, the icon for that day in the

calendar will be displayed as . Otherwise, it will be displayed as .



4. If there are record files found, the timeline will show the time duration of the record files.



5. You can click /  to move the timeline and click /  to zoom in or zoom out the timeline. You can also drag the timeline to move it.


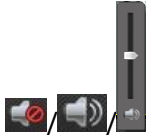








## 2.2 Playback Management

After searching out the record files, you can click the timeline to play back the record file from that time point. Or you can drag a channel that has record files from the channel list to the display screen.



Icon Description

	Speed control		Adjust view mode		Capture
---	---------------	---	------------------	---	---------

	Synchronous playback		Audio on / off / Adjust volume		Clip
	Play / Pause the video		Screen split		Digital zoom
	Stop playback		Full-screen playback		
	Single frame		Download record files		

**Notes:**

1. Up to 16-ch synchronous playback is supported.
2. The saving path for the captured pictures, clips and downloaded files can be set in Configuration interface. Please refer to *Chapter 4 Configuration* for detailed information.
3. You can also use the right-click menu which will pop up when right-clicking in the playback screen.

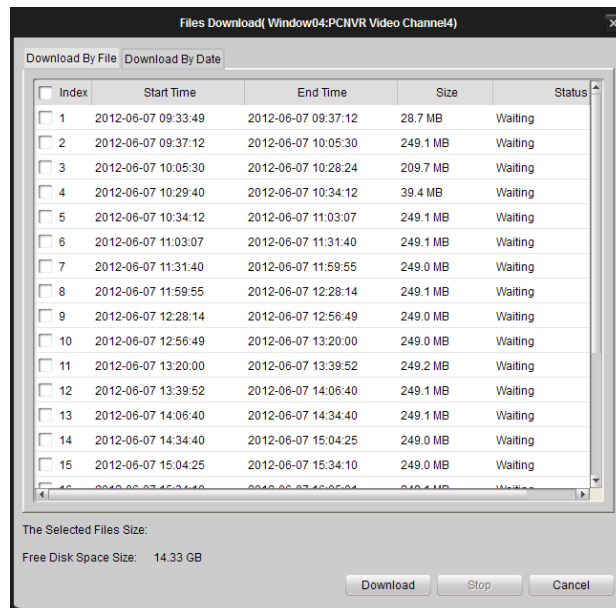


**Download Record Files**

You can download the record files to the designate path in your PC.

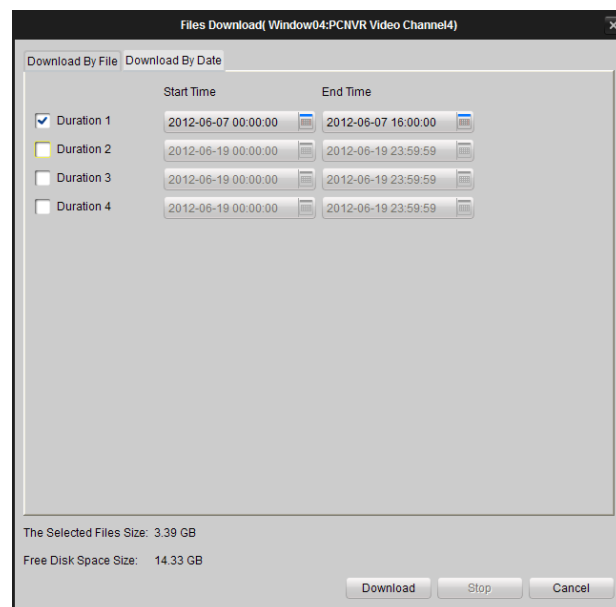
**Steps:**

1. When playing back the record file, click  to enter the Files Download interface.




2. You can download record files by file or by time.
3. Click **Download By File** to download files by file. Check  checkbox to select the files you want to download. Click **Download** to start downloading files. During the downloading process, you can click **Stop** to stop downloading.
4. Click **Download By Date** to download files by time. Check  checkbox before the time duration and set the start and end time. Click **Download** to start downloading files. During the downloading process, you can click **Stop** to stop downloading.

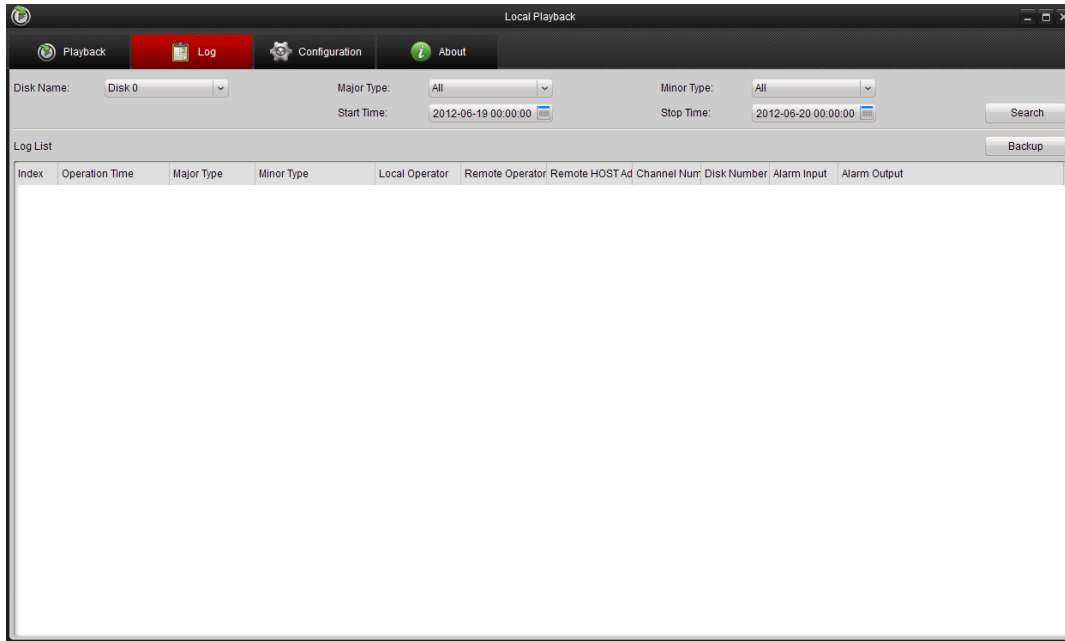
**Note:** The saving path for the downloaded files can be set in Configuration interface. Please refer to *Chapter 4 Configuration* for detailed information.





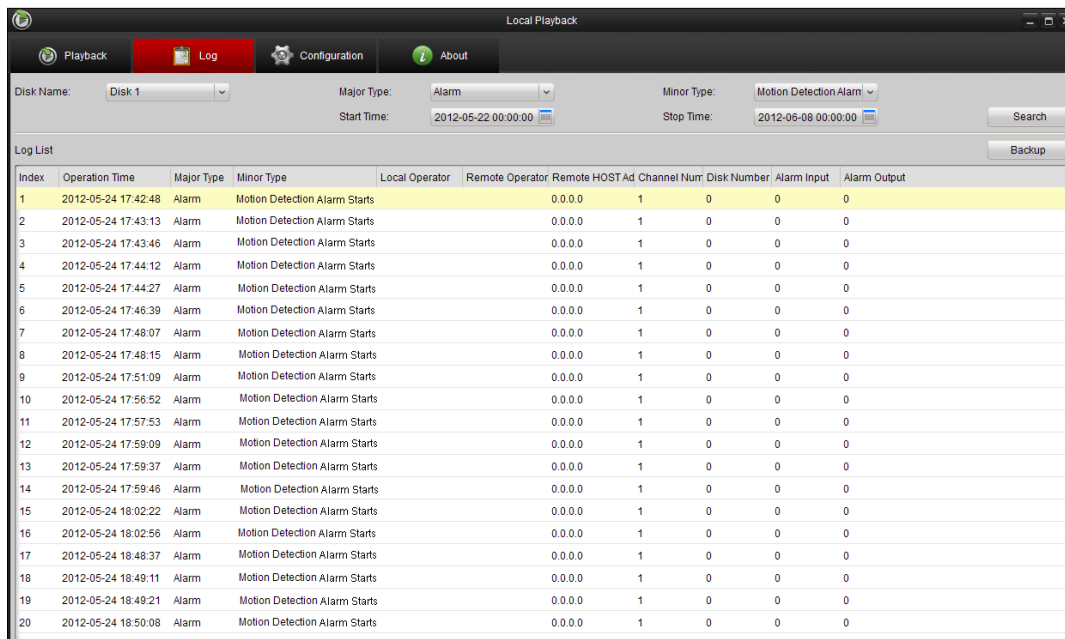
## Chapter 3 Log Search

Click  tab to enter the Log Search interface. You can view the log files that are stored in the hard disk of DVR, NVR or DVS.

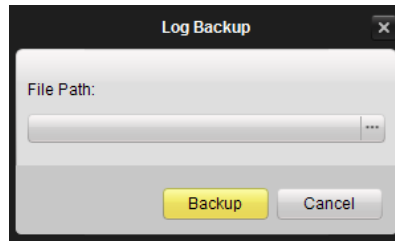



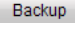
### Steps:

1. Select a hard disk of DVR, NVR or DVS in **Disk Name** dropdown list; set the major type, minor type, start time and stop time; click **Search** to search the log files.




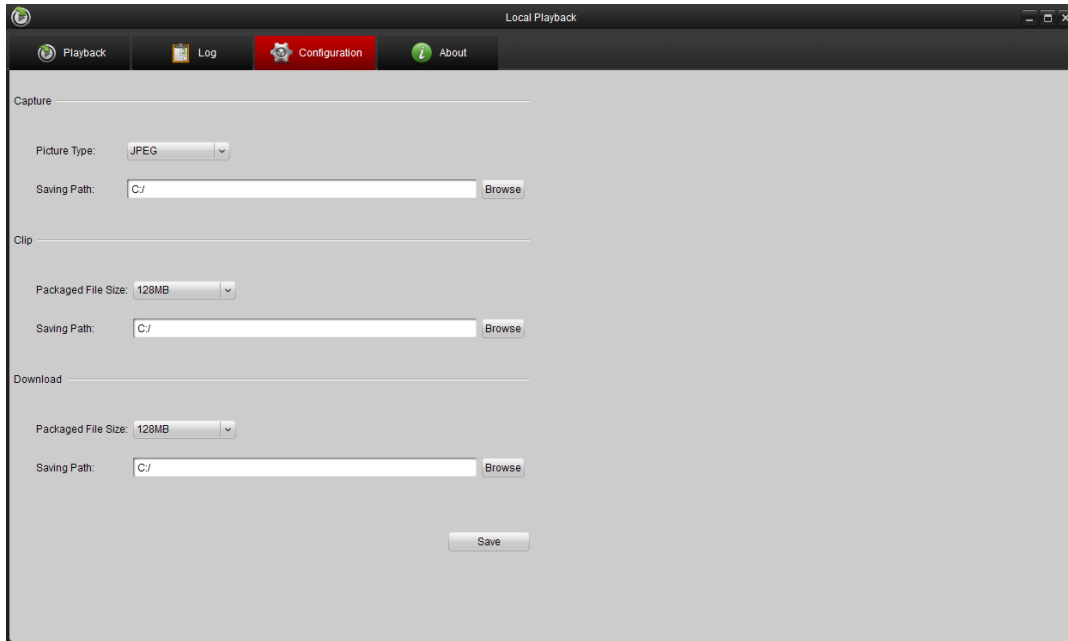
2. You can click **Backup** to back up the log files found.



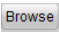
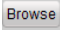
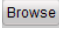
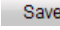
3. Click  to set the saving path and the name for the log files. Click  to back up the log files.

## Chapter 4 Configuration

Click  **Configuration** tab to enter the Configuration interface. You can set the saving path for the captured pictures, clips and downloaded files.



### Steps:

1. Set the type for the captured pictures and click  to configure the saving path for the captured pictures.
2. Select the size of packaged file for the clips and click  to set the saving path for the clips.
3. Choose the size of packaged file for the downloaded files and click  to set the saving path for the downloaded files.
4. Click  to apply the settings.